

KYTOLA® check valve Model 2680 is a spring loaded device, which allows free flow of medium in one direction but closes immediately upon flow ceasing or changing direction.

Reverse flow is prevented thereby protecting any measuring or regulating equipment from process media.



- Closes if flow stops or reverses
- Withstands corrosive media
- Maximum pressure 300 bar
- Easily removed

## CHECK VALVE 2680

### FEATURES

- Robust stainless steel construction
- Can be mounted in any position

### TYPICAL APPLICATIONS

- Liquid feed lines
- Gas feed lines
- Pressurised sealing water systems

### OPTIONS

- Special seals

**Model 2680**

Body	AISI 316
Seals	Nitrile (*Viton®, *EPDM)
Max. pressure	300 bar
Max. differential pressure	5 bar
Opening pressure	0.15 – 0.25 bar

\*) Special construction on request

2680-

**Connections**

Male inlet, female outlet

**A**

Female inlet, female outlet

**B****Inlet****Outlet**

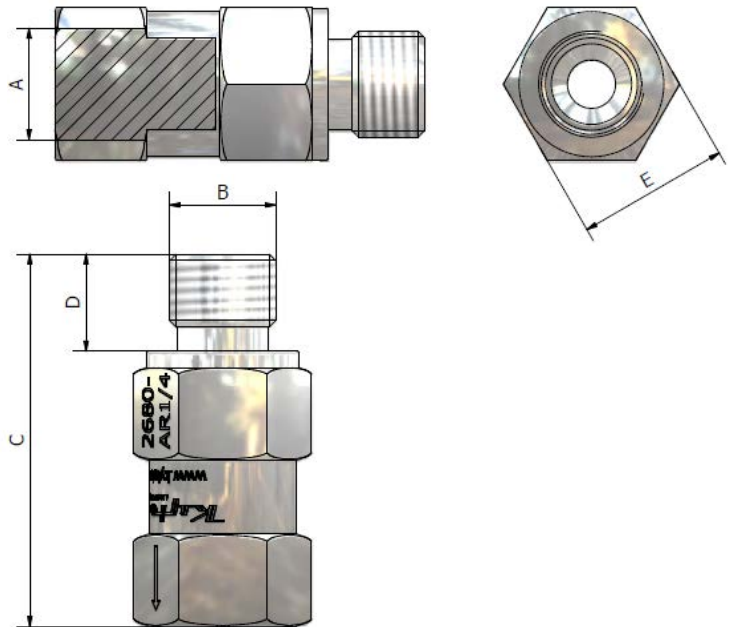
G 1/4"	G 1/4"	R 1/4
G 3/8"	G 3/8"	R 3/8
G 1/2"	G 1/2"	R 1/2
G 3/4"	G 3/4"	R 3/4
G 1"	G 1"	R 1

**Special Feature**

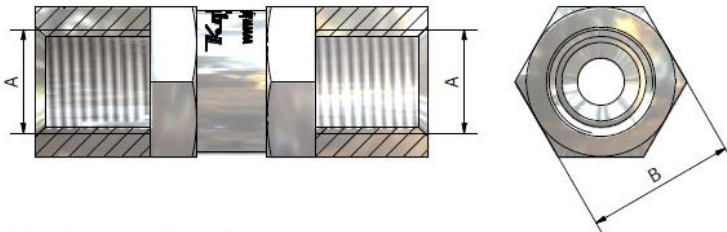
Viton® seals

**V**

EPDM seals

**E**

A	B	C	D	E
G 1/4	G 1/4	46	12	19
G 3/8	G 3/8	50	12	24
G 1/2	G 1/2	60	14	27
G 3/4	G 3/4	65	16	32
G 1	G 1	70	18	41



A	B	C
G 1/4	19	50
G 3/8	24	55
G 1/2	27	65
G 3/4	32	70
G 1	41	75

**Kytola**  
INSTRUMENTS

www.kytola.com



**Kytola Instruments Oy**

Olli Kytölän tie 1  
FI-40950 Muurame, Finland  
Tel. +358 20 779 0690  
Fax +358 14 631 419  
E-mail info@kytola.com