

KYTOLA® Model VEx Multi-tube Variable Area Flow Meter is designed for reliable measuring and monitoring of liquid and gas flows.

It comes in a range of different options and offers a choice of end blocks – aluminium, stainless steel AISI 316 or polyamide.



FLOW METER VEx

FEATURES

- Large selection of materials
- Built-in flow adjustment valve and quick change flow tube
- CRN approved select models

TYPICAL APPLICATIONS

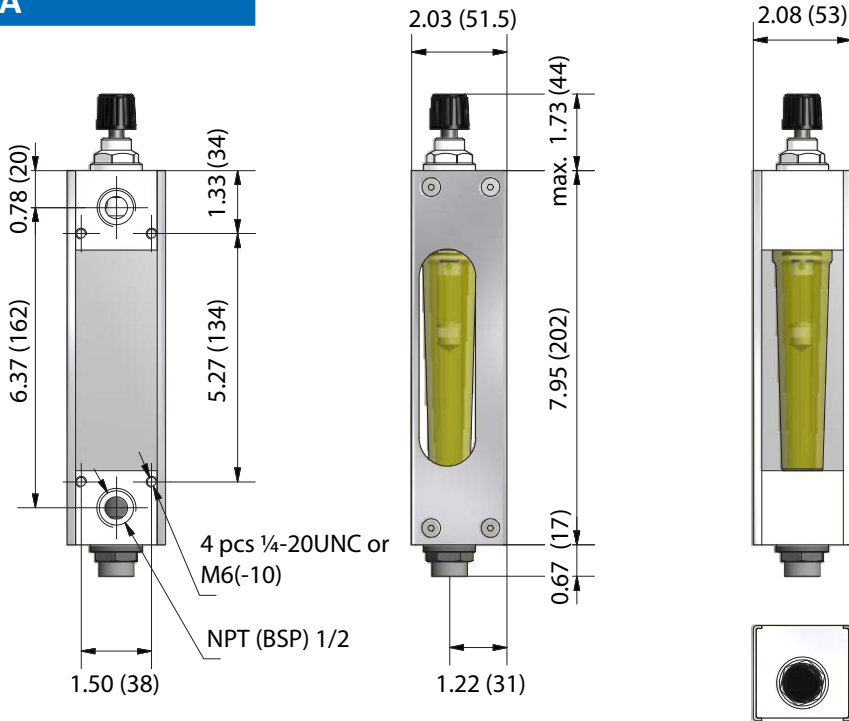
- Lubrication oil measurement
- Sealing and cooling water measurement
- Flush water applications
- Gas flow measurements

OPTIONS

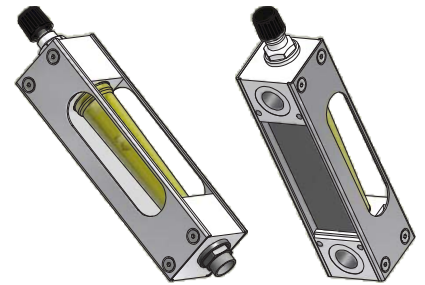
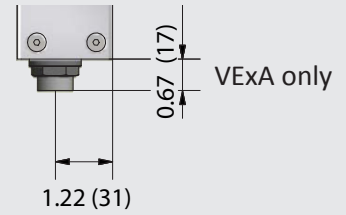
- Low flow alarm
- Viton or EPDM seals
- PES flow tube

- Sturdy construction
- Multi-tube version (1–7 tubes)
- Easy to install, clean and maintain
- Alarm-ready

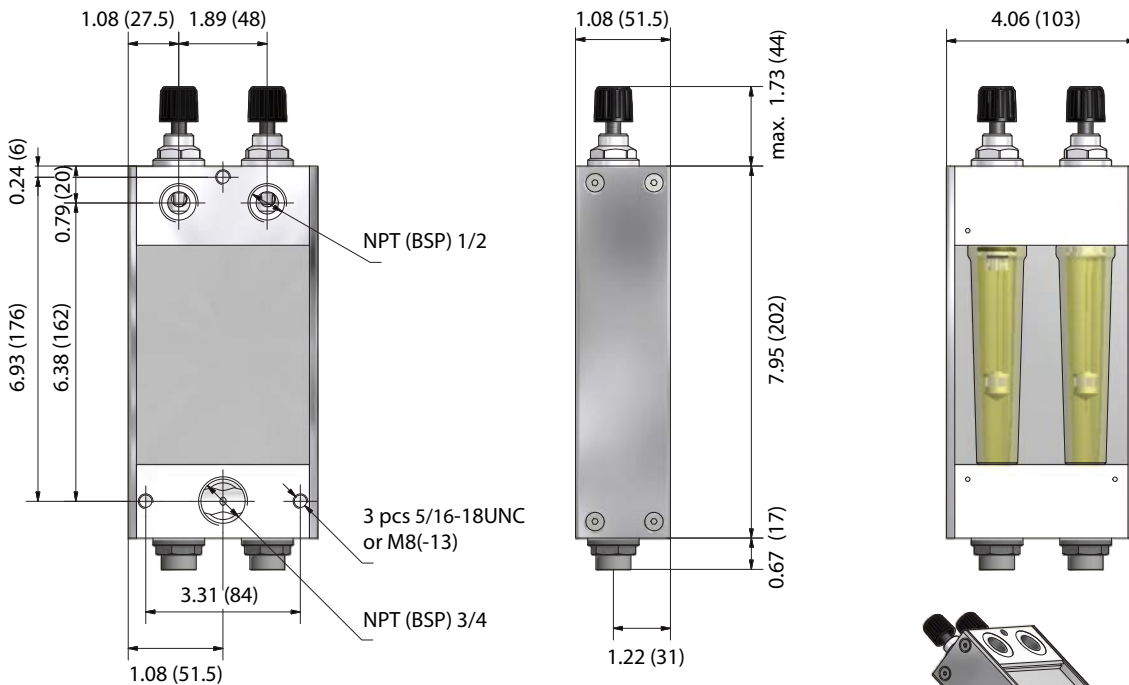
VEA



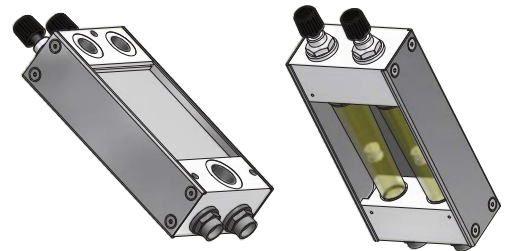
NOTE: These measurements of model VExA also apply to models VExH and VExK, except that those are **without** alarm sensor sockets (17 mm) in the lower end block.



VE2A



NOTE: Measurements in the drawings in this datasheet are in inches (and millimeters) if not stated otherwise.



Kytola
INSTRUMENTS

www.kytola.ca



Kytola Instruments Inc.

900 Old Roswell Lakes Parkway, Suite 120

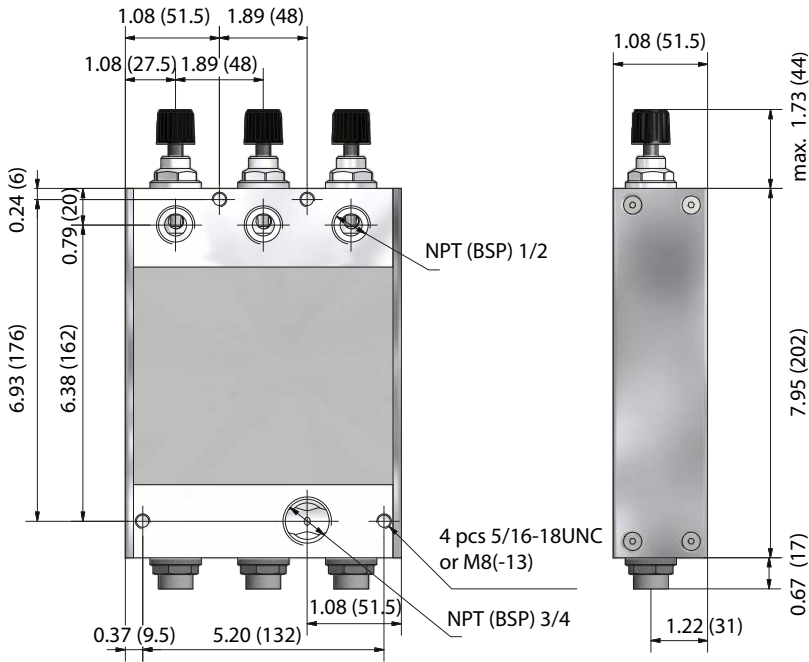
Roswell, GA 30076, USA

Tel: +1 678 701 3569

Fax: +1 514 448 5151

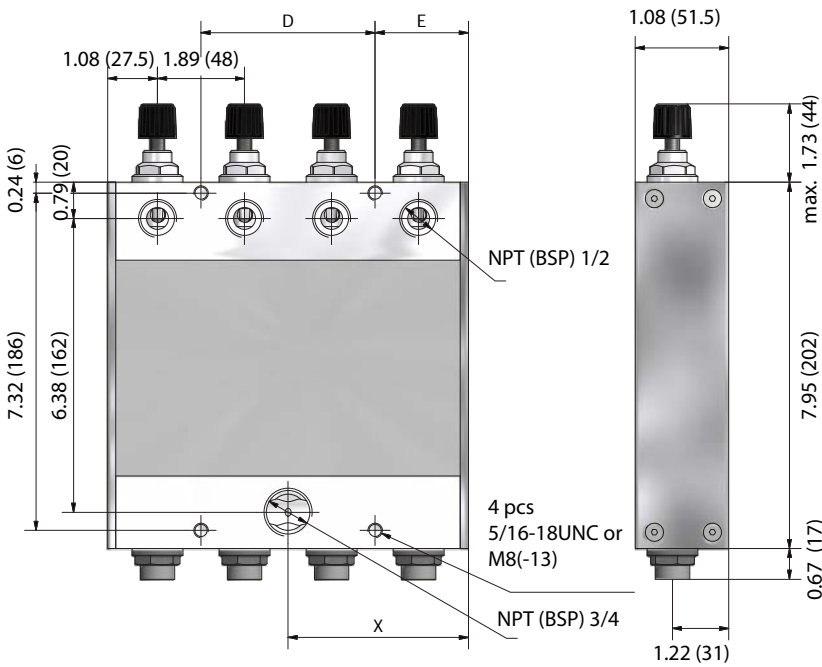
E-mail: flow@kytola.ca

VE3A



NOTE: Measurements in the drawings in this datasheet are in inches (and millimeters) if not stated otherwise.

VE4A (...VE7A)



	VE4A	VE5A	VE6A	VE7A
L	7.83 (199)	9.72 (247)	11.61 (295)	13.50 (343)
X	3.92 (99.5)	3.92 (99.5)	5.81 (147.5)	5.81 (147.5)
D	3.78 (96)	5.67 (144)	7.56 (192)	9.45 (240)
E	2.03 (51.5)	2.03 (51.5)	2.03 (51.5)	2.03 (51.5)

Kytola
INSTRUMENTS

www.kytola.ca



Kytola Instruments Inc.

900 Old Roswell Lakes Parkway, Suite 120

Roswell, GA 30076, USA

Tel: +1 678 701 3569

Fax: +1 514 448 5151

E-mail: flow@kytola.ca

Model	VExA	VExH	VExK
End blocks	Aluminium	AISI 316	Nylon
Side plates	AISI 316	AISI 316	AISI 316
Max. pressure	440 psi (30 bar)	440 psi (30 bar)	290 psi (20 bar)
Max. temperature	175°F(80°C),*248°F(120°C)	175°F(80°C),*248°F(120°C)	175°F(80°C)
Weight per flow tube	1.7 lbs. (0.75 kg)	4.4 lbs. (2.00 kg)	2.1 lbs. (0.95 kg)
Valve housing	Aluminium	AISI 316	AISI 316
Valve spindle	AISI 316	AISI 316	AISI 316
Flow tube	Grilamid (PA-12) (*PES)		
Connections	BSP 1/2" or NPT 1/2"		
Float	AISI 329 or AISI 329/PTFE (depending on range)		
Seals	Nitrile (*Viton®, EPDM)		
Accuracy	±5% F.S. H ₂ O, 70°F (20°C)		

*Special construction on request

Flow Tubes					
Single tube	<i>blank</i>				
Number of flow tubes	x				
VExA: max 7; VExH, VExK: max 3					
End Block Material					
Aluminium (not for H ₂ O)		A			
AISI 316		H			
Nylon		K			
Flow Range H ₂ O USGPM	Flow Range H ₂ O L/min	Flow Range Air SCFM	Flow Range Air NL/min		
0.1 – 0.5	0.4 – 2	0.5 – 2.75	15 – 70	6H*	
0.2 – 0.9	0.75 – 3	1 – 5	30 – 130	3H*	
0.4 – 1.4	1.5 – 5	1.5 – 6.5	40 – 170	3K*	
0.6 – 2.2	2 – 9	2.5 – 10	60 – 260	3L*	
0.7 – 2.6	2.5 – 10	3 – 11	75 – 300	3M*	
0.75 – 3.75	2 – 15	3 – 16	75 – 400	4N*	
1 – 4.5	4 – 17	4 – 18	100 – 450	4D*	
1 – 5	4 – 20	4 – 24	100 – 650	4E*	
1.5 – 8.0	5 – 30	5 – 27.5	150 – 700	4F*	
Scale					
H ₂ O L/min (20°C)				A	
H ₂ O USGPM (70°F)				G	
Air NL/min (20°C, 1.013 bar abs)				R	
Air SCFM (70°F, 14.7 psia)				T	
Relative 1–10				D	
Special Feature					
Alarm readiness**				D	
BSP connections			<i>blank</i>		
NPT connections				N	
Grilamid flow tube, nitrile seals			<i>blank</i>		
PES flow tube, nitrile seals				V	
PES flow tube, Viton® seals				W	
Grilamid flow tube, Viton® seals				X	
EPDM seals				Y	
		Standard feature: leave <i>blank</i>			
		Special feature: choose Character			

* Air flow ranges (70°F/14.7 psia, 20°C/1.013 bar abs) for calibration purposes only

** Only models VEA...VE7A, VEH, VE2H, VEK, VE2K

Copyright© Kytola Instruments Oy 2017. Dimensions and measurements are given within normal tolerances. Manufacturer reserves the right to changes without prior notification. File VEx_es10NA_en Published 12/2017.