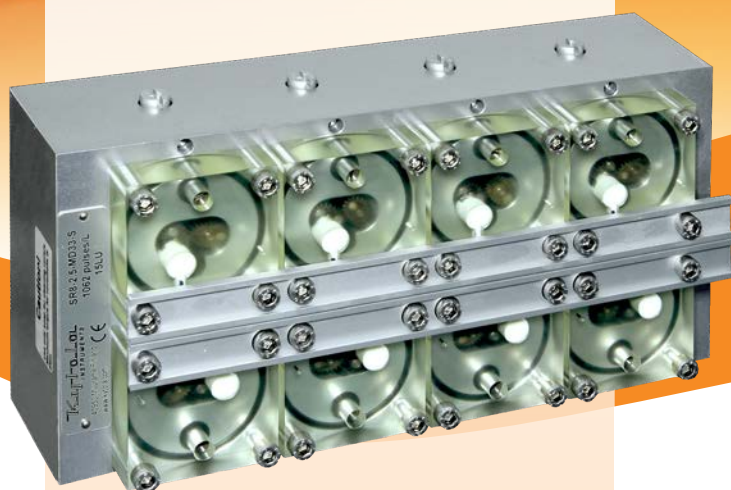


The KYTOLA® Oval Gear Meter Model SRx is designed and developed for lubrication oil measurement in demanding industrial environments.

The Model SRx oval gear meter is a positive displacement meter which always shows the correct flow rate regardless of oil temperature or viscosity changes.



- For oil
- Multi-channel model
- Max. 12 PPM (6 L/min)
- Transparent cover
- Kytola coil or NAMUR sensors
- NPT or G thread connectors
- Flow adjustment valves
- ATEX version (II 2GD c TX) as option



ISO 9001 ISO 14001

## OVAL GEAR METER SRx

### FEATURES

Large viscosity range  
30 – 1000 cSt

Independent of viscosity and  
temperature changes

Transparent cover provides highly  
visible oil flow indication

Pulse output

Sturdy construction

By-pass valves for service  
“on the run”

### TYPICAL APPLICATIONS

Lubrication oil flow monitoring

Industrial flow monitoring

Process control

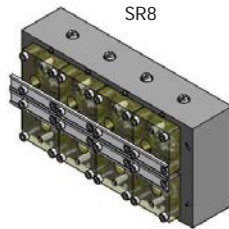
Model	SRx-1	SRx-3	SRx-6
Flow range PPM (L/min)	0.2 – 3 (0.1 – 1.5)	0.4 – 6 (0.2 – 3)	1 – 12 (0.5 – 6)
Output pulses/pint (pulses/liter)	993.7 (2 100)	502.5 (1 062)	137.2 (290)
Connections G/NPT	1/2"	1/2"	1/2"
Body	Aluminium		
Gears	Composite polymer		
Cover	Polyamide		
Valve	AISI 316		
Seals	Viton®		
Sensor	Kytola coil (compatible with Kytola measuring stations) or NAMUR; EN 60947		
Max. pressure	145 psi (10 bar), 290 psi (20 bar)*		
Max. temperature	+176°F (+80°C)		
Viscosity range	30–1000 cSt		
Weight	SR4: 5.5 lbs (2.5 kg)	SR6: 7.7 lbs (3.5 kg)	SR8: 9.9 lbs (4.5 kg)
Accuracy	±5% of reading		

\* Special construction on request

SR6



SR8



Multi-channel Model		
4 measuring points	4	
6 measuring points	6	
8 measuring points	8	

Flow Range		
PPM	L/min	
0.2 – 3	0.1 – 1.5	1
0.4 – 6	0.2 – 3	3
1 – 12	0.5 – 6	6

Service valve	S
---------------	---

Connections	
G threads	G
NPT threads	N

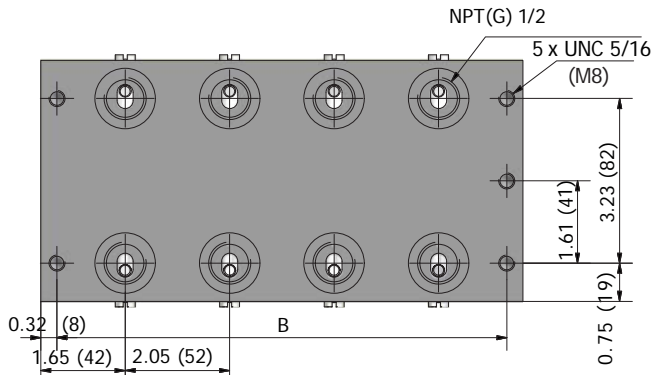
  

Sensors	
Kytola coil (compatible with Kytola measuring stations)	C
NAMUR; EN 60947	A
Without sensor (M12 x 1 thread)	D

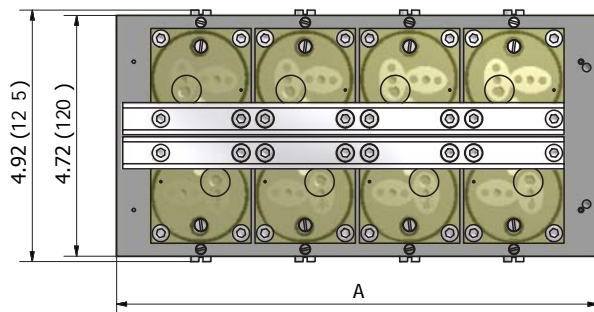
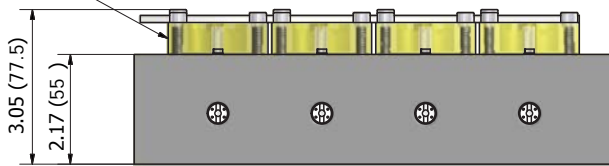
  

Special Feature	
No ATEX	blank
ATEX version – only with NAMUR sensor	Z
Please choose options A and Z	

Standard feature: leave blank



Leads 5 ft (1.5 m)



	A	B
SR4	5.35 (136)	4.72 (120)
SR6	7.40 (188)	6.77 (172)
SR8	9.45 (240)	8.89 (224)

NOTE: Measurements in the drawings in this datasheet are in inches (and millimeters) if not stated otherwise.

**Kytola**  
INSTRUMENTS

www.kytola.ca



**Kytola Instruments Inc.**

900 Old Roswell Lakes Parkway, Suite 120

Roswell, GA 30076, USA

Tel: +1 678 701 3569

Fax: +1 514 448 5151

flow@kytola.ca