

The KYTOLA® model TTFH is a sturdy industrial variable area flow meter. It has a stainless steel body with a heavy-duty impact resistant acrylic flow tube. It is a reliable instrument for measuring and monitoring large water flows.



- Flow rate water up to 1000 L/min
- Maximum pressure 16 bar
- Maximum temperature 75°C
- Minimum temperature seals -30°C nitrile, -20°C Viton®
- Flange connections DN 80

ISO 9001:2008 ISO 14001:2004



FLOW METER TTFH

FEATURES

- Sturdy construction
- Stainless steel body
- Acrylic (PMMA) impact resistant flow tube

TYPICAL APPLICATIONS

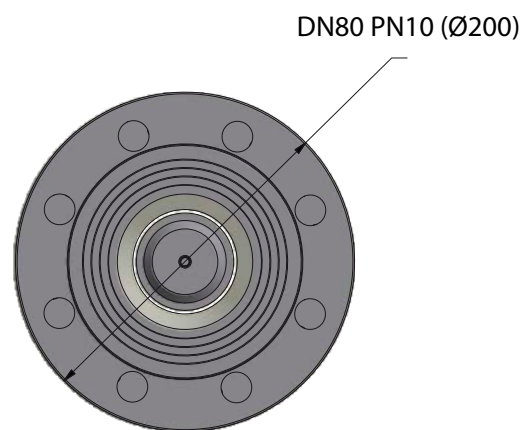
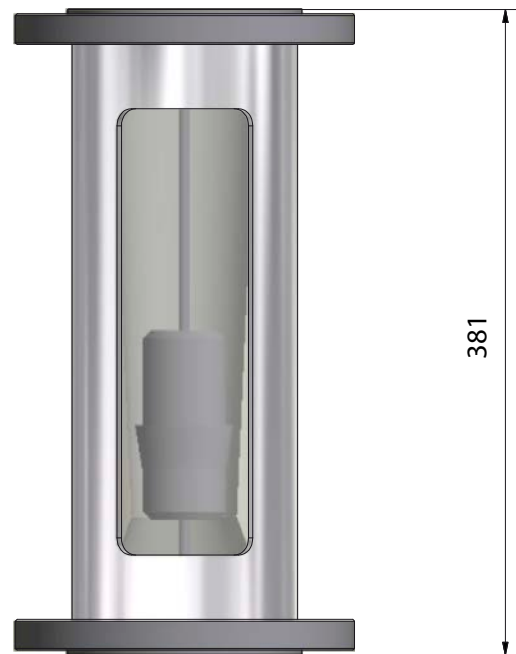
- Water treatment
- Power plants
- Swimming pools

OPTIONS

- Viton®, EPDM seals
- Special scale markings

| | |
|-----------------|--|
| Model | TTFH |
| Connections | DN 80 flanges |
| Max pressure | 16 bar |
| Max temperature | 75°C |
| Body | AISI 316 |
| Float | AISI 329 Note! Other possible wetted metal parts: AISI 316 |
| Flow tube | Acrylic |
| Seals | Nitrile (*Viton®, *EPDM) |
| Weight | 17.5 kg |
| Accuracy | ± 5% F.S. |
| | *) Special construction on request |

| | | | |
|--|----|---|---|
| TT | | | |
| Connections | | | |
| DN 80 flanges | FH | | |
| Flow Range H₂O L/min | | | |
| 75–600 | 4A | | |
| 100–1000 | 4B | | |
| Scale | | | |
| H ₂ O L/min at +20°C | | A | |
| Special Feature | | | |
| Viton® seals | | | V |
| EPDM seals | | | Y |



Copyright © Kytola Instruments Oy 2016. Dimensions and measurements are given within normal tolerances. Manufacturer reserves the right to changes without prior notification. File TTFH_es20_en Published 8/2016.



www.kytola.com



Kytola Instruments Oy
 Olli Kytölään tie 1
 FI-40950 Muurame, Finland
 Tel. +358 20 779 0690
 Fax +358 14 631 419
 E-mail info@kytola.com